

### Overview

- High capacity, 450-700kw
- Dual voltage: 208-240/480vAC
- Digital load control, 5 kw resolution
- Touchscreen operator interface
- Data acquisition and recording
- Network units to form large systems

### Description

The Simplex Electra is a very large capacity, high performance Portable Load Bank designed to provide the manufacturers, distributors and users of large AC generators and UPS systems with sophisticated testing capability. Electra Load Banks feature digital controllers with network control and data acquisition capability. Operator interface is via touchscreen. Load control is via screen keypad. All electrical values display on the screen and are recorded by the system for future data retrieval. Any number of Electra and dynaMITE Load Banks can be combined for large system capacities and networked for central control and data acquisition.

The Electra Series comprises models rated 450-500-550-600-650-700kw of resistive load at both 240V and 480V, 3-phase. It can be applied at any AC voltage to 480V AC, 50-60 Hertz standard, single or 3-phase. Load step resolution is 5KW.

### Features

**UL Listed:** File Number E151624.

**Digital Control:** PLC based control with 8-inch color TFT touchscreen interface. MODBUS over RS-485 network communication. See page 3.

**Instrumentation:** Digital power transducer with Ethernet communication to digital controller. Data display on touchscreen. Data acquisition and recording. See page 3.



**Load Elements:** Simplex "Powr-Web" chromium alloy, open wire, continuously supported, power resistor. See page 2 for details.

**Load Control:** 3-Pole contactors.

**Load Element Circuit Protection:** Branch circuit fuses. One set of fuses each 50KW branch. Fuses are current limiting type, 200KAIC, 600V.

**Cooling System:** 3-phase, direct-drive fan, 12,500 CFM.

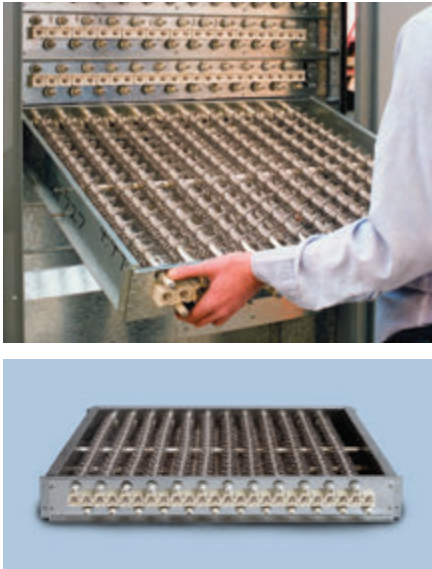
**Malfunction Detection System:** Protection against fan failure, high exhaust air temperature, high intake air temperature, overvoltage and fan reversal. Exhaust air temperature displays on screen.

**Control Power Supply:** Dual voltage control power transformer with supply power switchable to internal (generator) or external.



**Touch Screen:** Easily removable from panel.

**Connection:** "Cam-Lok" type power connections.



## Powr-Web Resistive Load Element

### Description

Simplex Load Banks utilize “Powr-Web” load elements. The “Powr-Web” is an advanced design, air-cooled power resistor specifically designed for application to Load Bank systems. The “Powr-Web” is conservatively operated at half the maximum temperature rating of the alloy and features a short-circuit-safe design based on continuous mechanical support of the element by high temperature, ceramic clad stainless steel rods. The “Power Webs” are assembled into discrete trays which are assembled in a vertical “stack.” Each tray in the “stack” is independently serviceable without disturbing adjacent trays.

### Specifications

- Alloy: FeCrAl
- Maximum continuous temperature rating: 1920°F
- Maximum operating temperature as applied in Load Bank: 1080° F
- Cool down time from operating to ambient temperature is 10 seconds.

### Construction

- Ceramic clad, stainless steel through-rods.
- UL Recognized

## Capacity Detail

Model	KW (1.0pf)	FLA			KW DETAIL		
		240V	480V	240V/480V	208/416V	380V	240V, 1-ph
Electra 450	450	1082	541	450	338	282	300
Electra 500	500	1202	601	500	375	313	333
Electra 550	550	1322	661	550	413	345	367
Electra 600	600	1442	721	600	450	376	400
Electra 650	650	1563	782	650	488	407	434
Electra 700	700	1683	842	700	525	439	467

## Cooling System

Model	HP	CFM	ΔT, Nom.	ΔT, Max.
Electra 450	3.0	9,000	153°F	290°F
Electra 500	3.0	10,500	160°F	325°F
Electra 550-700	5.0	12,500	158°F	350°F

**Voltage:** Dual Voltage: 240/480V AC, 3-phase Operational at any voltage to 480V AC maximum, single or 3-phase

**Frequency:** 50, 60 Hertz standard

**Connection:** “Cam-Lok” type

**Time Rating:** Continuous

**Ambient Air Temperature:** 120°F max

**Fault Rating:** 200KAIC

**Insulation Rating:** 600V, 302°F

### Control/Fan Power:

- 230/460V, 3-phase, 60 Hertz
- 190/380V, 3-phase, 50 Hertz
- Switchable internal (generator)-external
- 230/460-115V control power transformer internal to Load Bank.
- 15' external power cord

**Net Weight:** 1675 lbs.

## Digital Load Step Control

Nominal 5.0 kw resolution: direct enter any load value and controller will apply load within nominal 5kw resolution

## Digital Load Calibration Versus Voltage

Controller automatically calibrates loads for reduced voltage operation.

## Digital Control and Data Acquisition System

PLC based digital control with 8-inch color TFT touchscreen operator interface.

### Functions

- Control power source and voltage level detection
- Malfunction detection and protection
- Direct access (keypad) load control
- Alternate mimic panel load control
- Basic automation of load control
- Field adjustable exhaust temperature limits with temperature display
- Built-in control from customer supplied computer

### Instrumentation

Digital power transducer to digital controller and meter displays on touchscreen:

- 3-phase voltage (each, L-L)
- 3-phase current (each line)
- Frequency
- KW

### Data Acquisition

- Captures and records all electrical values
- Start recording/stop recording screen buttons
- One second sample rate
- Exports text file to detachable flash drive which plugs into USB port

### Outputs

MODBUS (standard) or BacNet (optional):

- Load applied
- Each electrical value as above



Main Screen



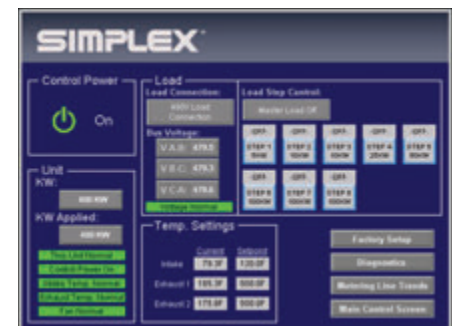
Monitoring Screen



Metering Trends Screen



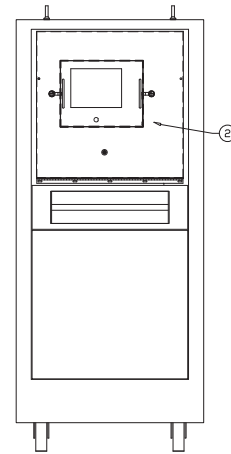
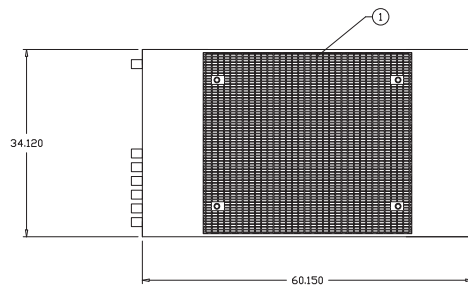
Diagnostics Screen



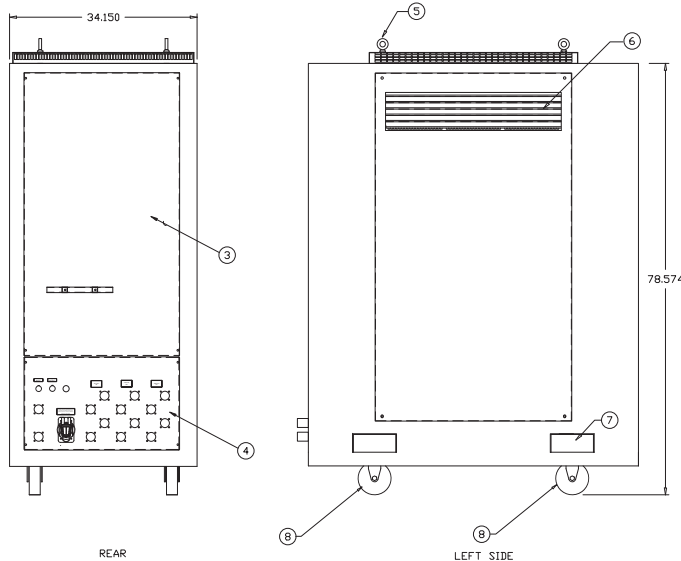
Maintenance Screen

## Dimensions and Key Features

- |   |  |  |
|---|--|--|
| 1. Screened Hot Air Exhaust   | 4. Cam-Lok Type Power Connections        | 8. Rubber Tired Casters, 6" (two front swivel, two rear fixed) |
| 2. Removable 8-inch Color TFT Touchscreen Controller  | 5. Lifting Eyes (four)                   | 9. Recessed Handle Pocket                                      |
| 3. Behind Connections Compartment: Removable Access Panel to Rear Distribution Bus, Fuses, Contactors | 6. Ventilation Louver (one on each side) |  |
|   | 7. Fork Lift Channels                    |  |

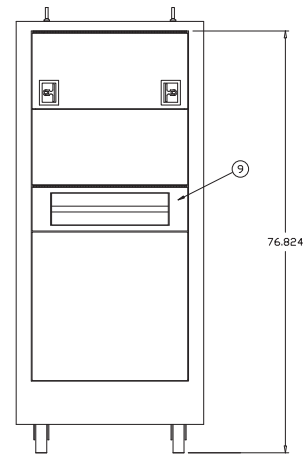


FRONT LESS CONTROL PANEL DOOR



REAR

LEFT SIDE



FRONT

## Options

- Network control cables, 25-foot basic length
- 400Hz modification
- Remote control cable extensions
- Simplex AUTO-TEST software for full automation of testing with data acquisition and report generation
- 12' connection cable set including 3-phase power cables, ground cable, stored in rear compartment
- Weather resistant enclosure
- Auxiliary inductive load banks with network control and data capability