



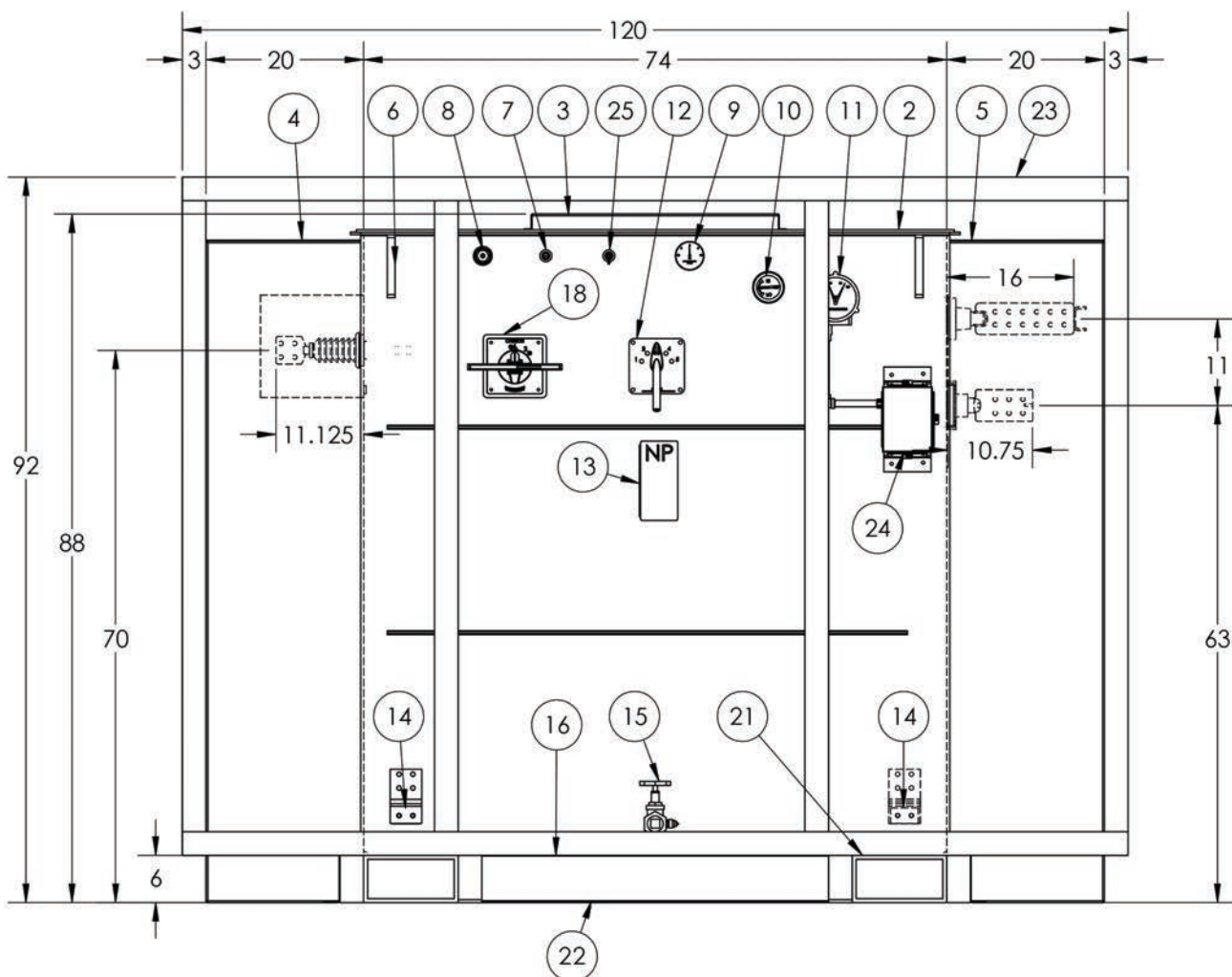
- kVA: 3500, 65°C Rise, 5.75% impedance, 85°C
- Insulating Liquid: Mineral Oil, "Non-PCB.", 780 GAL
- Three Phase, Class-Onan, 60Hertz
- BIL - H.V./L.V 95kV / 30kV
- Conductor MAT: H.V./L.V - AL/AL
- Primary Voltages: 2400v, 4160v, 6928v, 7200v, 7620v, 7970v, 8320v, 12,000v, 12,470v, 13,200v, 13,800v, 14,400v
- Secondary Voltages: 600Y/346v, 480Y/277v

High Voltage → ⏏ 480Y/277 x 600Y/346

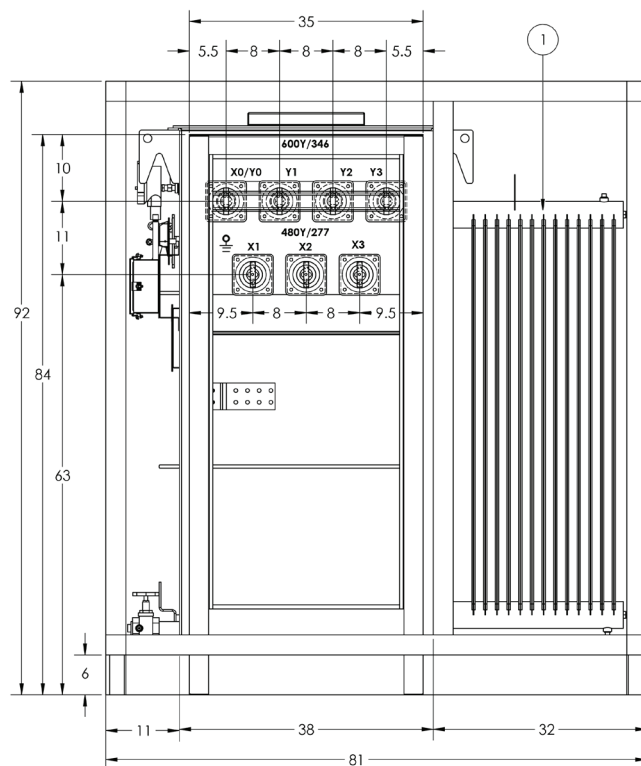
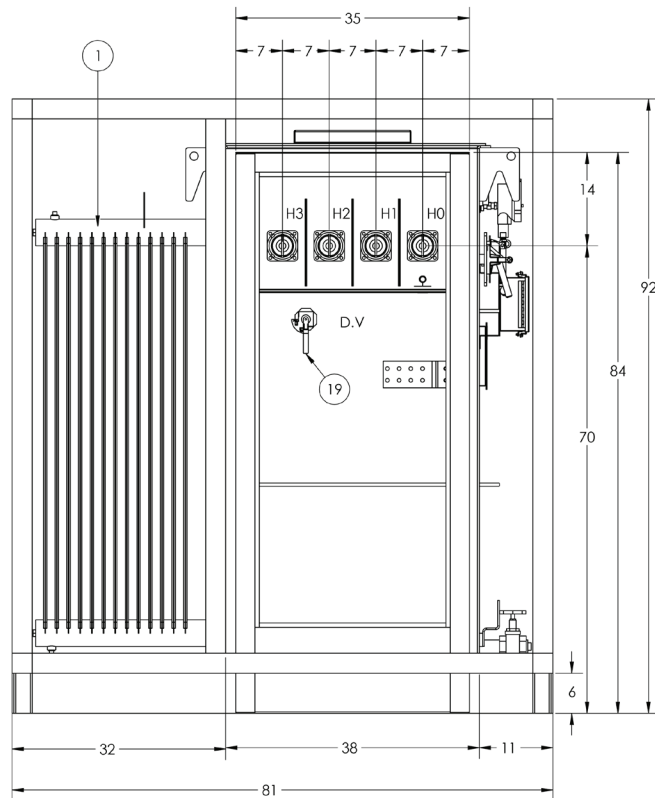
3500 kVA substation transformer
4 each high voltage bushings in full length enclosure with 4-hole spades
7 each low voltage bushings in full length enclosure with 6-hole spades
Aluminum windings
Mineral oil filled
Pressure relief valve
Filler plug with Schrader valve
Oil level gauge, temperature gauge with dual contacts and pressure vacuum gauge
1" drain valve with sampler
Externally operated no load tap changer
Externally operated no load dual voltage switch
Externally operated no load delta-wye switch
Forklift pockets
Gas sample valve
NEMA 4 control box
2" drain valve with oil sampler
3" square tubing protective cage
Diagrammatic corrosion resistant nameplate
Furnished with Standard ANSI accessories

**3500 Kva Substation Type
Transformer Mineral Oil
Filled Three-Phase, Onan,
65°C Rise, 60-Hertz**

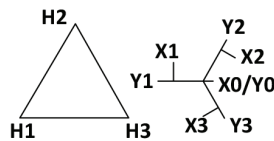
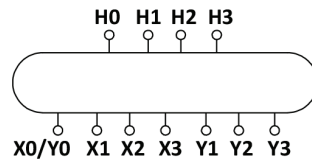
1. Radiators (flexoplate) (as required).
2. Welded on cover.
3. Bolted on inspection plate.
4. Tamperproof removable high voltage terminal chamber cabinet with three point latching lift off padlockable door with stainless steel hinges and open bottom for conduit or cable entrance. High voltage terminal chamber supplied with three each high voltage bushings with nema 4 hole spade terminals. One each high voltage neutral bushing with nema 4 hole spade terminal and removable ground strap. One each eight hole ground pad provided in throat.
5. Tamperproof removable low voltage terminal chamber cabinet with three point latching lift off padlockable door with stainless steel hinges and open bottom for conduit or cable entrance. Low voltage terminal chamber supplied with three each low voltage bushings with nema 12 hole spade terminals and three each 6 hole spade terminals. One each low voltage neutral bushing with nema 12 hole spade terminal and removable ground strap. One each eight hole ground pad provided in throat.
6. Lifting hooks (4 each required).
7. Automatic pressure relief valve.



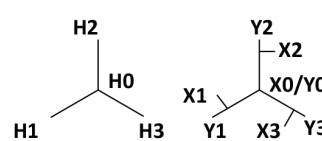
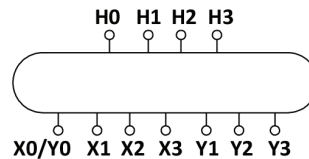
8. One inch filling plug with schrader valve.
9. Pressure vacuum gauge.
10. Liquid level gauge.
11. Dial type thermometer with dual alarm contacts.
12. Externally operated no-load tapchanger padlockable in any position.
13. Diagrammatic corrosion resistant nameplate.
14. Two each stainless steel ground pads, one on back side of tank.
15. Two inch drain valve with oil sampling device.
16. Transformer base.
17. Transformer filled with non-p.C.B. Mineral oil at time of manufacture.
18. Externally operated no-load delta-wye switch.
19. Externally operated no-load dual voltage selector switch.
20. Provisions for jacking.
21. Fork truck lifting provisions.
22. Bottom of transformer undercoated to prevent corrosion.
23. 3" Square tubing protective cage.
24. All alarm contacts wired to terminal strip inside nema 4 control box.
25. Gas sampler valve.
26. Paint rental - white.



S/N:	AS ASSIGNED	TYPE : CZ	MFG DATE :
kVA :	3500	65°C RISE	5.75% IMP 85 °C
INSULATING LIQUID	MINERAL OIL	"NON-PCB."	780 GAL
THREE PHASE	CLASS - ONAN	60 HERTZ	INST BOOK V-100
VOLTAGE RATING	2400 DELTA X 7200 DELTA - 480Y/277 X 600Y/346 4160GRDY/2400 X 12470GRDY/7200 - 480Y/277 X 600Y/346		
BIL - H.V /L.V	95kV / 30 kV	CONDUCTOR MAT: H.V/L.V - AL/AL	



30° DISP



0° DISP

DELTA HIGH VOLTAGE CONNECTIONS				
VOLTS	AMP	T.C ON	DELTA-WYE SWITCH ON	DUAL VOLTAGE SWITCH ON
2400	842	D	1	1
8320	243	A	1	2
7970	254	B	1	2
7620	265	C	1	2
7200	281	D	1	2
6928	292	E	1	2

WYE HIGH VOLTAGE CONNECTIONS				
VOLTS	AMP	T.C ON	DELTA-WYE SWITCH ON	DUAL VOLTAGE SWITCH ON
4160Y	486	D	2	1
14400Y	140	A	2	2
13800Y	146	B	2	2
13200Y	153	C	2	2
12470Y	162	D	2	2
12000Y	168	E	2	2

CAUTION: TAP CHANGER MUST BE ON D POSITION FOR 2400 VOLTS

CAUTION: TAP CHANGER MUST BE ON D POSITION FOR 4160Y VOLTS

NOTE: H0 AND X0 BUSHING MUST BE SOLIDLY GROUNDED WHEN THE DELTA - WYE SWITCH IS IN POSITION 2 (GROUNDED Y)

NOTE: WHEN GRDY VOLTAGE IS USED ON DELTA FEED, DROP THE NEUTRAL AT THE HIGH VOLTAGE SIDE OF TRANSFORMER. CONNECT H1,H2 AND H3 TO THE DELTA SYSTEM.

MAX OPERATING PRESSURE OF LIQUID PRESERVATION SYSTEM 7.5 LBF/IN² POSITIVE AND 5 LBF/IN² NEGATIVE.

CORE AND COIL **7845 LBS**

TANK & FITTINGS **5305 LBS**

TANK DESIGNED FOR 12LBF/IN² VACUUM FILLING LIQUID LEVEL BELOW TOP SURFACE OF THE HIGHEST POINT OF THE HIGHEST MANHOLE FLANGE AT 25°C 6.56 INCHES.

LIQUID **5850 LBS**

TOTAL MASS **19000 LBS**

LIQUID LEVEL CHANGES 0.45 INCHES/10°C CHANGE IN LIQUID LEVEL TEMPERATURE.

UNTANKING MASS (HEAVIEST PIECE) **7845 LBS**

CONTAINS NO DETECTABLE LEVEL OF PCB (LESS THAN 2 PPM) AT THE TIME OF MANUFACTURE