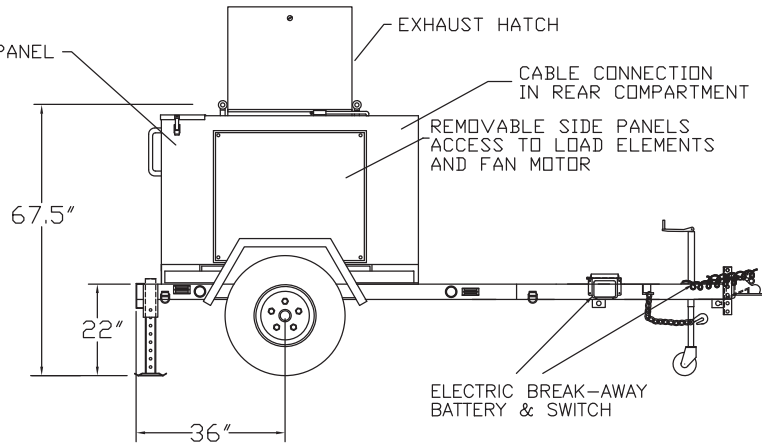
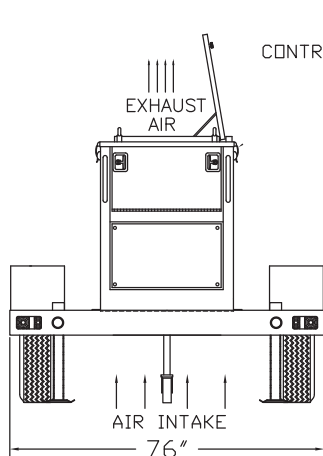
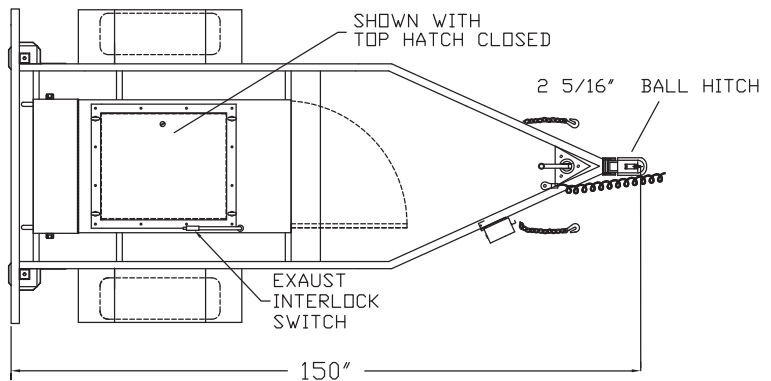
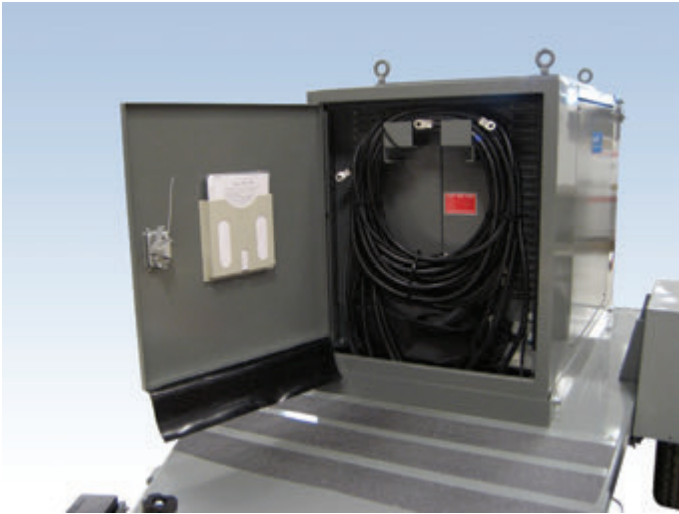


# dynaMITE Trailer

315KW, 410KW; 240/480V, 5KW Resolution





## DynaMite 300

### Capacity Detail

Volt. (AC)	480V,3Ø	416V,3Ø	380V,3Ø	240V,3Ø	208V,3Ø	240V,1Ø
KW(1.0pf)	315	238	197	289	217	192.5

### Load Step Detail

Qty.	KW Each Step (1.0 p.f.)					
	480V,3Ø	416V,3Ø	380V,3Ø	240V,3Ø	208V,3Ø	240V,1Ø
1	-	-	-	1.25	.94	.84
1	-	-	-	2.5	1.9	1.7
1	5	3.75	3.1	5	3.75	3.4
1	10	7.5	6.3	10	7.5	6.7
1	20	15	12.6	20	15	13
3	40	30	25	40	30	26
2	80	60	50	80	60	52

## DynaMite 400

### Capacity Detail

Volt. (AC)	480V,3Ø	416V,3Ø	380V,3Ø	240V,3Ø	208V,3Ø	240V,1Ø
KW(1.0pf)	410	308	257	410	308	273

### Load Step Detail

Qty.	KW Each Step (1.0 p.f.)					
	480V,3Ø	416V,3Ø	380V,3Ø	240V,3Ø	208V,3Ø	240V,1Ø
1	5	3.75	3.1	5	3.75	3.3
1	10	7.5	6.3	10	7.5	6.7
1	20	15	12.6	20	15	13.3
1	25	18.75	16	25	18.75	16.7
1	50	37.5	31	50	37.5	33.3
3	100	75	63	100	75	66.7