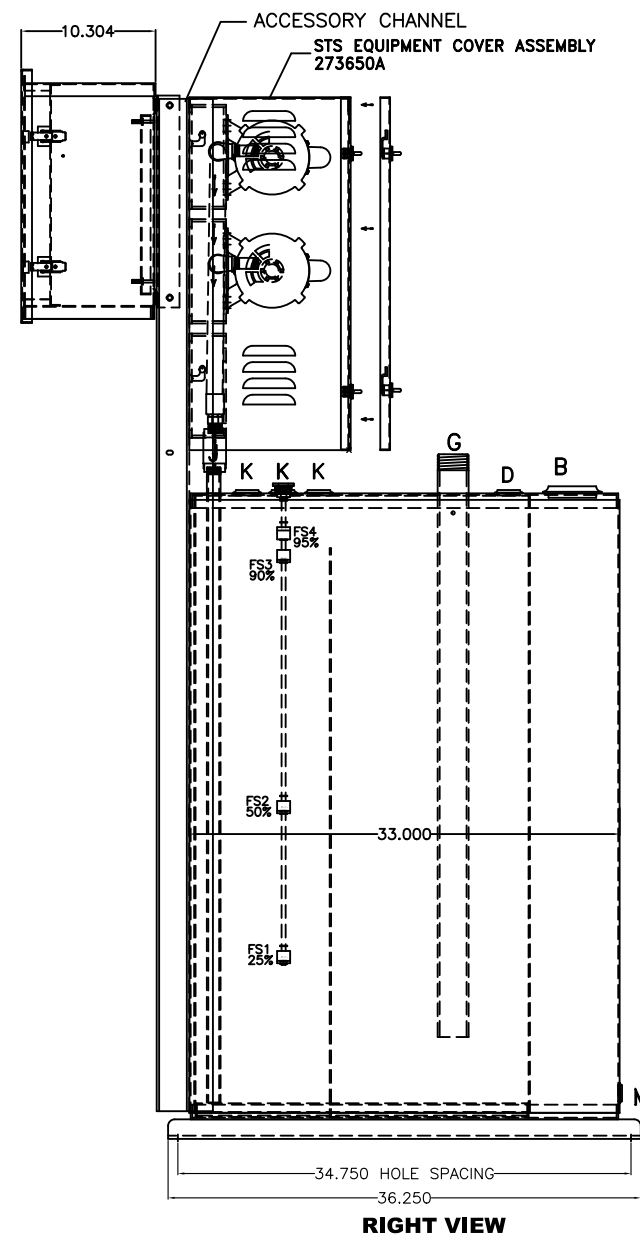
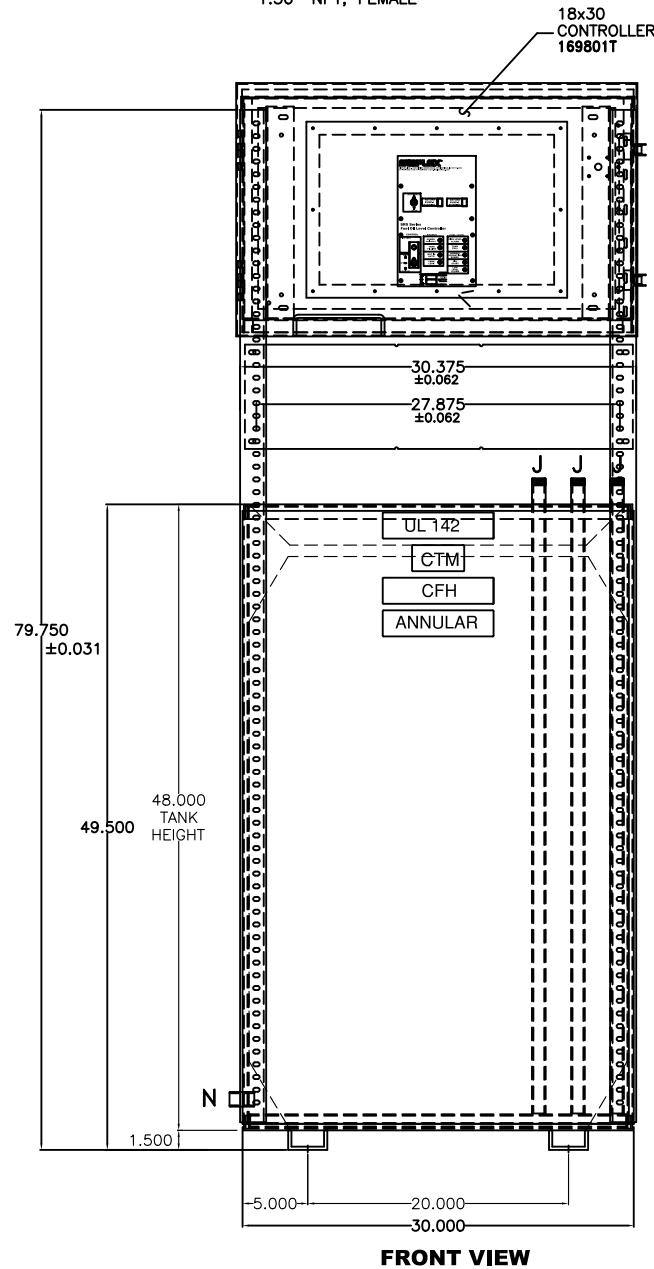
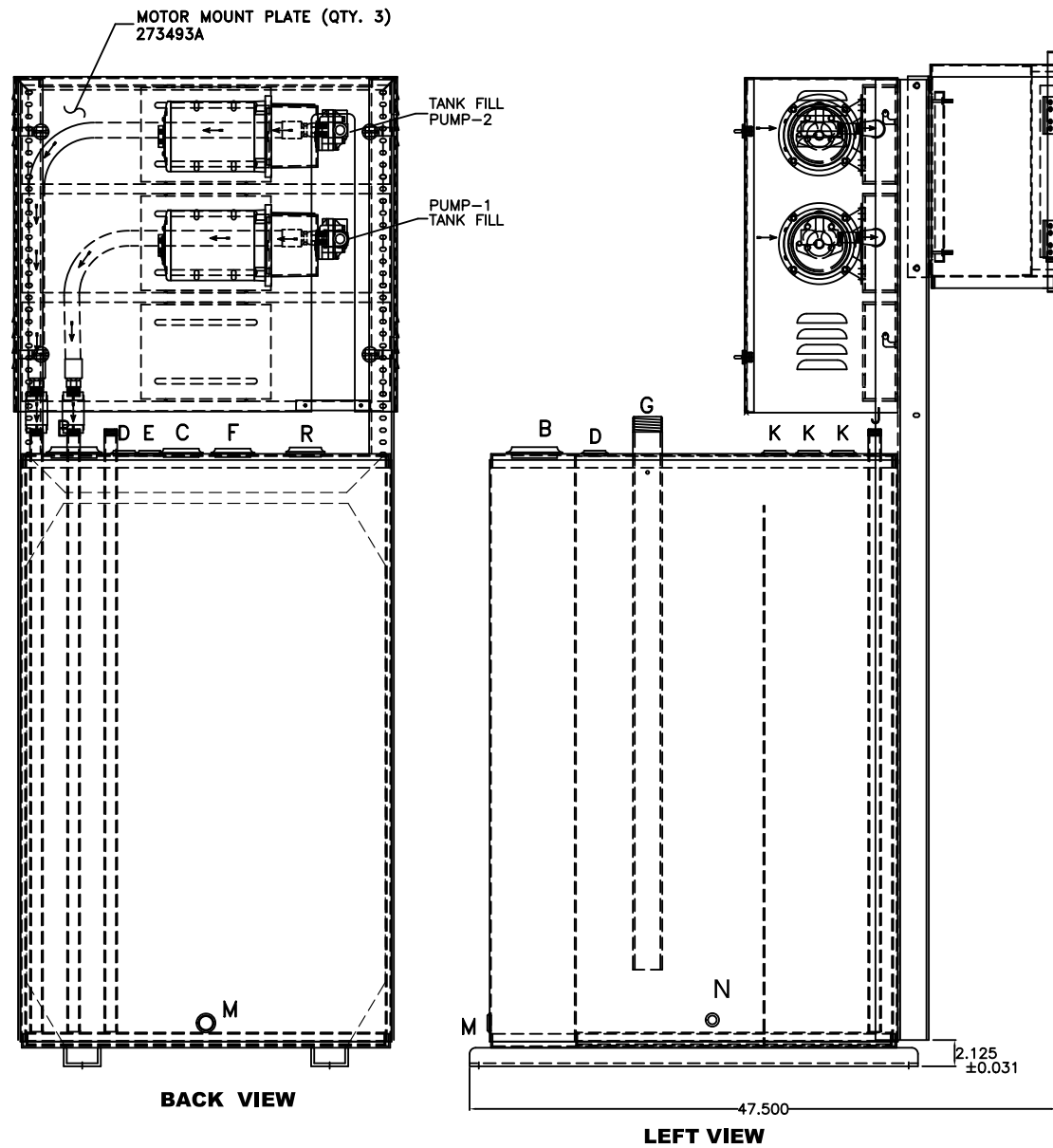
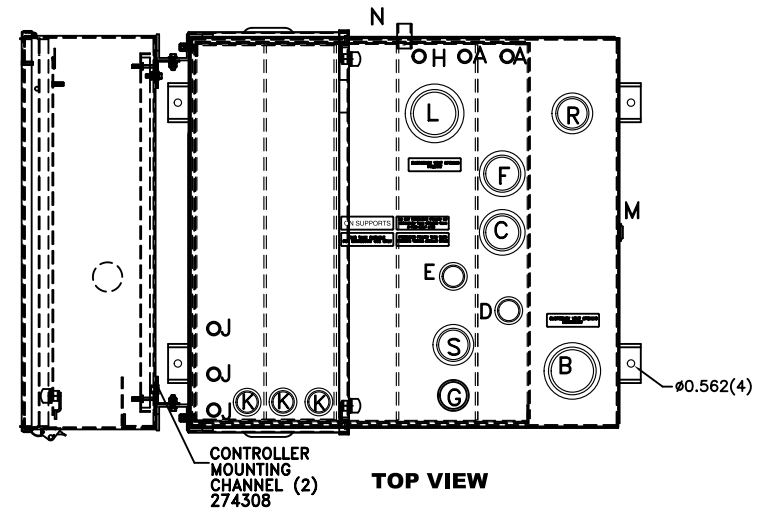


| PORT | DESCRIPTION | SIZE |
|------|---|--------------------|
| A | ENGINE SUPPLY DROP TUBE - (QTY. 2) (1.000 CLEARANCE TO BOTTOM) | 0.75" NPT, MALE |
| B | SECONDARY TANK E-VENT PORT | 3.00" NPT, FEMALE |
| C | OVERFLOW PORT | 2.00" NPT, FEMALE |
| D | ENGINE RETURN PORT | 1.00" NPT, FEMALE |
| E | EXTRA PIPE FLANGE (QTY. 2) | 1.00" NPT, FEMALE |
| F | TANK VENT PORT | 2.00" NPT, FEMALE |
| G | MANUAL FILL PORT W/ BLEED HOLE (6.000 CLEARANCE TO BOTTOM) | 2.00" NPT, MALE |
| H | HAND PUMP DROP TUBE (1.000 CLEARANCE TO BOTTOM) | 0.75" NPT, MALE |
| J | PUMP CONNECTION TO TANK (QTY. 3) (1.000 CLEARANCE TO BOTTOM) | 0.75" NPT, MALE |
| K | FLOATSWITCH MOUNTING PORT (QTY. 3) | 1.00" NPT, FEMALE |
| L | PRIMARY TANK EMERGENCY VENT | 3.00" NPT, FEMALE |
| M | SECONDARY TANK DRAIN PORT | 0.375" NPT, FEMALE |
| N | PRIMARY TANK DRAIN PORT | 0.50" NPT, FEMALE |
| R | LEAK SENSOR PORT | 1.50" NPT, FEMALE |
| S | EXTRA PORT | 1.50" NPT, FEMALE |



- NOTES:**
- 1) CONSTRUCTION: 12 GA. H.R.S.
TANK TOP: 10 GA. H.R.S.
 - 2) LISTING: UL 142
 - 3) RATING: ATMOSPHERIC TANK
TESTED TO 3 PSI
 - 4) ALL DIMENSIONS ±.125"
 - 5) TANK COLOR = SIMPLEX CAROLINA VERMILION
CONTROLLER COLOR = SIMPLEX COASTAL HAZE

| | | |
|---------------------------|---------------|-----------------------|
| SIMPLEX | | SPRINGFIELD, ILLINOIS |
| SCALE : ~ | APPROVED BY : | DRAWN BY : JDS |
| DATE : 04/27/16 | | REVISED : |
| SIMPLEX TECHNOLOGY SERIES | | STS 150 GALLON |
| FUEL OIL DAY TANK | | |
| | | 273471B |