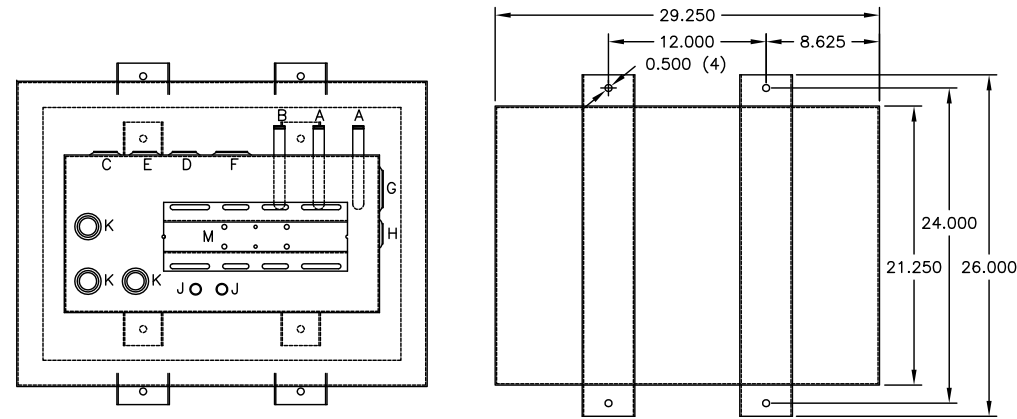


TANK FITTING SCHEDULE		
PORT	DESCRIPTION	SIZE
A	ENGINE SUPPLY DROP TUBE	0.50" NPT, MALE
B	SIPHON DRAIN DROP TUBE	0.50" NPT, MALE
C	OVERFLOW PORT (NOT USED WITH RETURN PUMP)	1.00" NPT, FEMALE
D	ENGINE RETURN PORT	1.00" NPT, FEMALE
E	EXTRA PIPE FLANGE	1.00" NPT, FEMALE
F	TANK VENT PORT	1.50" NPT, FEMALE
G	MANUAL FILL PORT	2.00" NPT, FEMALE
H	HAND PUMP MOUNTING PORT	0.75" NPT, FEMALE
J	PUMP CONNECTION TO TANK DROP TUBE	0.50" NPT, MALE
K	FLOATSWITCH MTG/INSPECTION PORT	1.00" NPT, FEMALE
L	RUPTURE BASIN DRAIN	.375" NPT, FEMALE
M	PUMP MOTOR MOUNTING BRACKET	



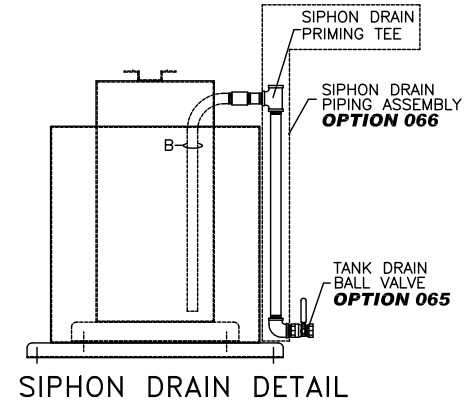
TANK FITTINGS
TOP VIEW

TANK MOUNTING
DETAIL

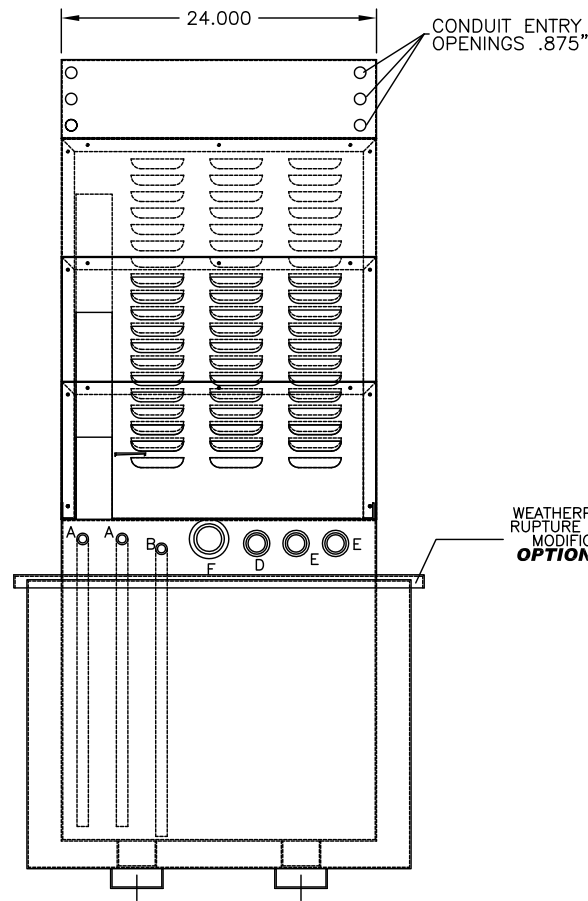
OPTIONS INSTALLED	
<input type="checkbox"/>	X002-DELETION OF STD PUMP & MOTOR
<input type="checkbox"/>	015-MANUAL HAND PUMP
<input type="checkbox"/>	025-MANUAL FILL PIPE W/LOCKABLE CAP
<input type="checkbox"/>	060-FUEL STRAINER, Y-TYPE
<input type="checkbox"/>	061-FUEL STRAINER, Y-TYPE, 1.0" NPT, 40 MESH
<input type="checkbox"/>	064-EMERGENCY VENT CAP, 4.00"NPT., 2.5 P.S.I.
<input type="checkbox"/>	065-TANK DRAIN BALL VALVE
<input type="checkbox"/>	066-SIPHON DRAIN PIPING ASSEMBLY
<input type="checkbox"/>	070-PRIMING TEE & CHECK VALVE ASSEMBLY
<input type="checkbox"/>	080-SOLENOID VALVE, N.C. 115VAC
<input type="checkbox"/>	087-MANUAL SHUT-OFF BALL VALVE
<input type="checkbox"/>	088-MANUAL SHUT-OFF BALL VALVE 1.00"NPT
<input type="checkbox"/>	101-VACUUM GAUGE
<input type="checkbox"/>	190-SECONDARY CONTAINMENT, OPEN TOP
<input type="checkbox"/>	191-FLOATSWITCH IN SECONDARY CONTAINMENT
<input type="checkbox"/>	192-SECONDARY CONTAINMENT DRAIN BALL VALVE
<input type="checkbox"/>	196-WEATHERPROOF SECONDARY CONTAINMENT

OPTIONS INSTALLED	
<input type="checkbox"/>	120-EXTRA 1.00" PIPE CONNECTION
<input type="checkbox"/>	125-EXTRA ENGINE SUCTION STANDPIPE
<input type="checkbox"/>	270-POWER AVAILABLE PILOT LIGHT
<input type="checkbox"/>	280-PUMP RUN-OFF-AUTO SWITCH
<input type="checkbox"/>	311-LOW FUEL LEVEL ALARM
<input type="checkbox"/>	312-HIGH FUEL LEVEL ALARM
<input type="checkbox"/>	325-HIGH FUEL LEVEL PUMP STOP
<input type="checkbox"/>	333-CRITICAL LOW LEVEL ALARM-ENGINE SHUT DOWN
<input type="checkbox"/>	340-PUMP RUNNING LIGHT
<input type="checkbox"/>	345-DUPLEX PUMP CONTROLLER
<input type="checkbox"/>	390-RETURN PUMP & CONTROLLER
<input type="checkbox"/>	HIGH TOP USED W/ SINGLE PUMP 3/4 H.P. OR DUPLEX PUMPS/MOTORS

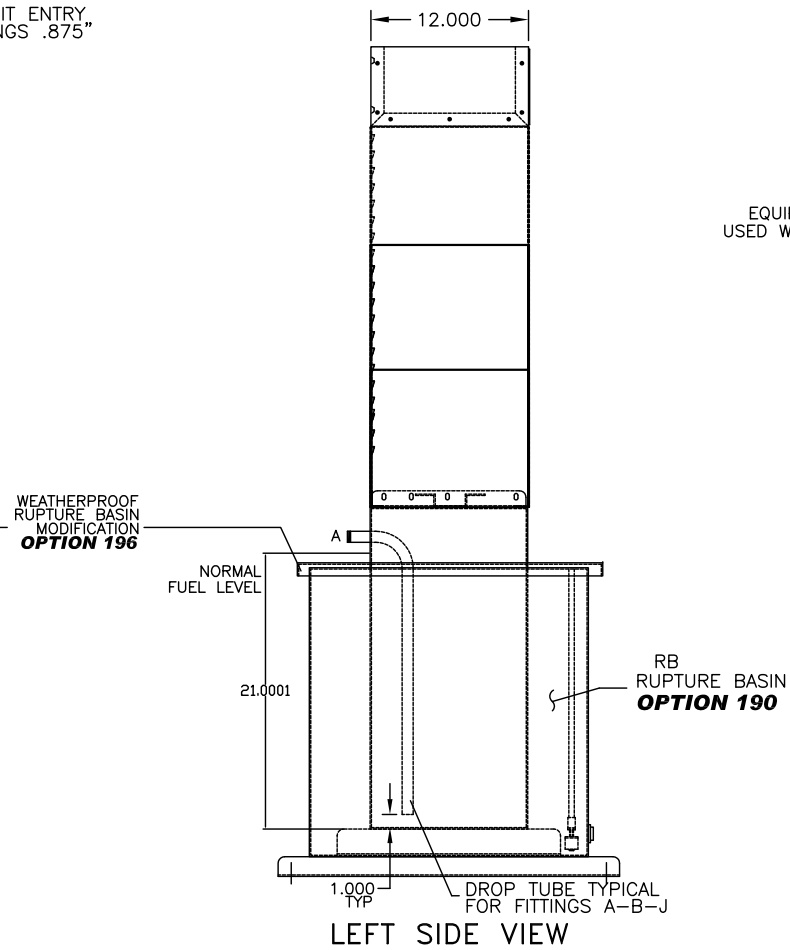
OPTIONS SHIPPED LOOSE	
<input type="checkbox"/>	050-PIPE STAND ADAPTER BASE
<input type="checkbox"/>	063-VENT CAP
<input type="checkbox"/>	087-MANUAL SHUT-OFF BALL VALVE .50"NPT
<input type="checkbox"/>	090-FOOT VALVE 1.00" NPT
<input type="checkbox"/>	093-FUSIBLE LINK VALVE 1.50" NPT
<input type="checkbox"/>	110-RELOCATION OF STD PUMP & MOTOR
<input type="checkbox"/>	377-ANTI-SIPHON SOLENOID VALVE, N.O. 120VAC



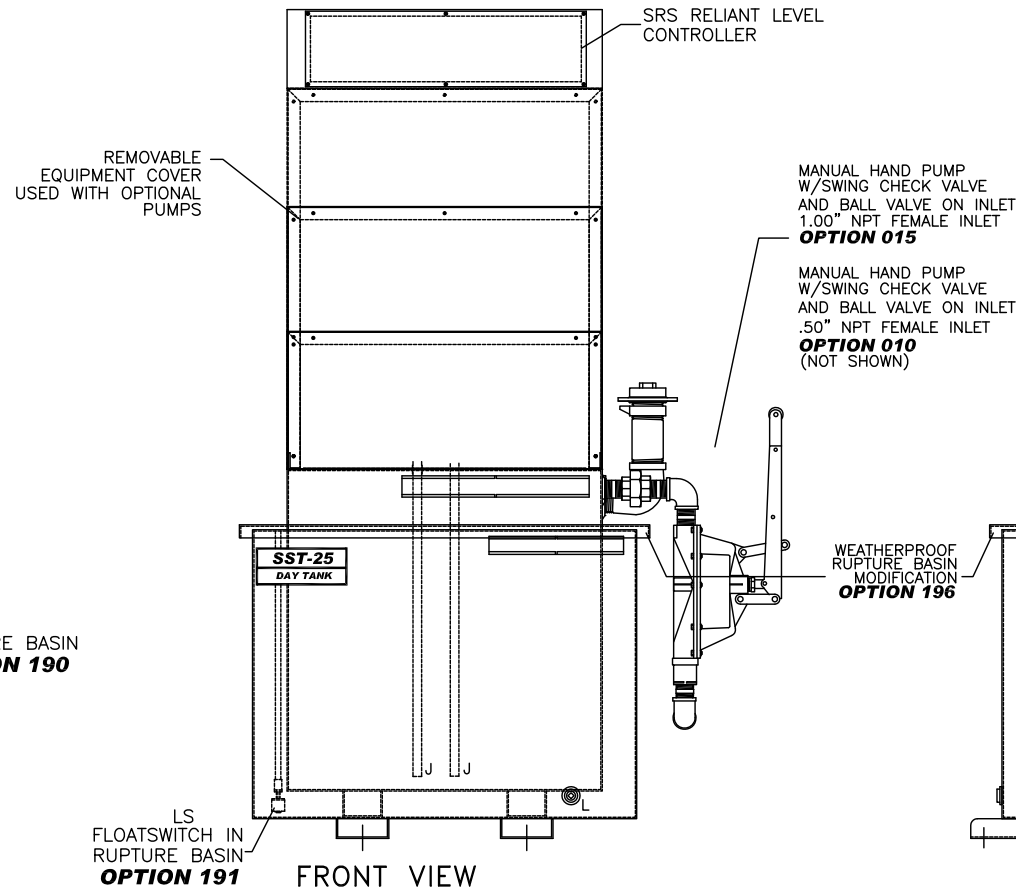
SIPHON DRAIN
DETAIL



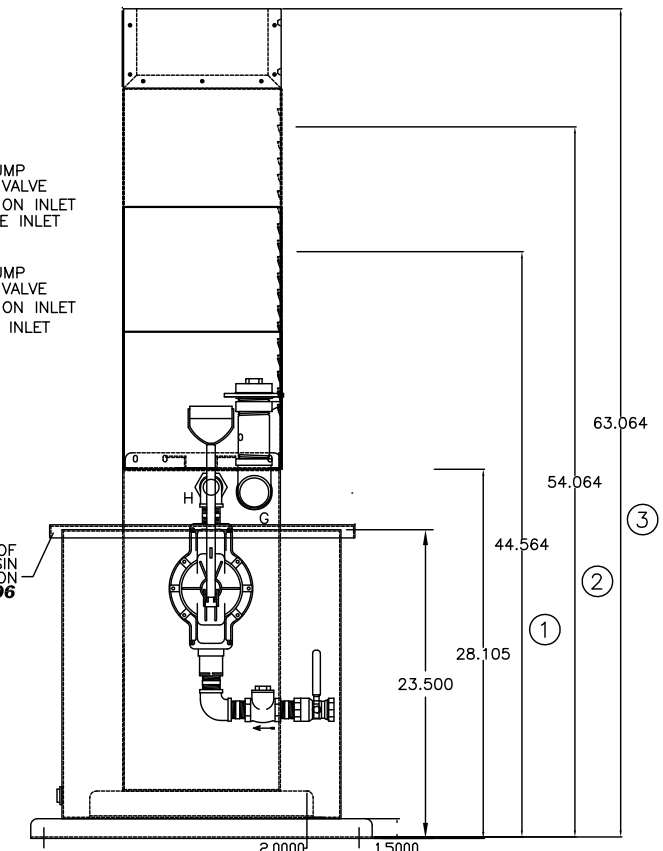
REAR VIEW



LEFT SIDE VIEW



FRONT VIEW



RIGHT SIDE VIEW

DAY TANK SHOWN WITH STANDARD CONTROL SECTION
AND OPTIONAL DUPLEX PUMP/LARGE PUMP SECTION
SEE TANK HEIGHT DETAIL.

NOTES:

- CONSTRUCTION: 12 GA. H.R.S.
- LISTING: UL 142**
- RATING: ATMOSPHERIC TANK TESTED TO 5 PSI
- FINISH: TANK POWDER COATED BONE WHITE
EQUIPMENT COVER POWDER COATED BONE WHITE
- DUE TO SYSTEM COMPLEXITY, SOME COMPONENTS MAY NOT BE VISIBLE IN ALL VIEWS
- ALL DIMENSIONS ±.125"

THE INFORMATION HEREON IS THE PROPERTY OF SIMPLEX, INC., AND/OR ITS SUBSIDIARIES. WITHOUT WRITTEN PERMISSION ANY COPYING, TRANSMITTAL TO OTHERS AND USE EXCEPT THAT FOR WHICH IT IS LOANED IS PROHIBITED. DESIGN SUBJECT TO CHANGE WITHOUT NOTICE.
©2010 SIMPLEX, INC. ALL RIGHTS RESERVED.

SIMPLEX		SPRINGFIELD, ILLINOIS
SCALE :	APPROVED BY :	DRAWN BY : RER
DATE : 08-10-10		REVISED :
SST-25 FUEL OIL DAY TANK PICTORIAL		
STANDARD	DRAWING NUMBER 211981	