

Reliant Series FilterTank

DESCRIPTION

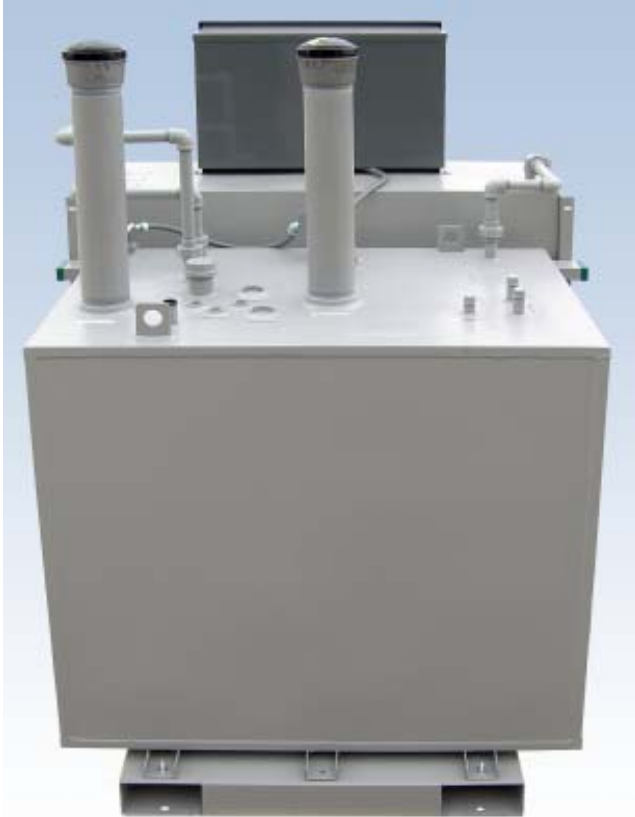
The Simplex Reliant Series FilterTank Systems Fuel Tank is a special variant of the Simplex Reliant Series product. The FilterTank variant incorporates an on-board filter-separator into the Reliant Series System. An on-board pump is required and can be either an included fill pump or return pump equipped with flow-control solenoid valves or a dedicated 2 GPM filter circulation pump.

OVERVIEW

- Variant of Simplex Reliant Series, with inclusion of integral tank filtration system.
- UL142 double-wall tank construction
- Addition of fuel filter-separator
- Re-circulates fuel in day tank to remove harmful particles and water
- Requires on-board pump
- 10-400 gallons
- For use as day tanks, return tanks, source tanks
- For use with fuel oil
- UL508 digital and analog controllers
- Specify Simplex Reliant FilterTank



SIMPLX®



**UL 142, Double-Wall
UL508 Controllers**



Filter-Separator Specification

- Epoxy coated steel filtration vessel with removable top closure, water sump and drain
- Replacable cartridge media combining particulate filtration, water coalescing and water separation
- Nominal 2-10 GPM flow rate, depending on pump selection
- 2-micron particulate filtration
- Nominal 5PPM water separation
- Differential pressure gauge and alarm
- Water detection sensor and alarm
- Automatic operation. HOA switch. Programmable for day of week, time of day and cycle time operation
- System stops and an alarm activates upon detection of a saturated filter or full water sump
- When used with Tank System included fill or return pump, a solenoid valve arrangement will be added to provide for continuous recirculation within the tank during a filtration cycle. **The filtration cycle will be interrupted if the included pump is called upon to refill or drain the tank.**
- When used with a dedicated circulation pump, a 2GPM, 0.33HP, 115v pump will be added and plumbed for simple re-circulation via supply and return drop tubes. A one-way check valve and isolation hand valves are also included

